

Roll No. ....

## BCA-101(N)

### B. C. A. (First Semester) EXAMINATION, Dec., 2012

(New Course)

Paper First

#### COMPUTER FUNDAMENTAL AND OFFICE AUTOMATION

Time : Three Hours ]

[ Maximum Marks : 75

Note : Section A is compulsory. Attempt any *seven* questions from Section B and *one* question from Section C.

Section – A

18

(Numerical/Analytical/Problematic Questions)

1. Choose the correct answer from given alternatives. 4
  - (i) CPU reads the information from secondary memory :
    - (a) Directly
    - (b) First information is transferred to main memory and from there CPU reads
    - (c) Through registers
    - (d) None of these
  - (ii) Main memory stores :
    - (a) Data only

- (b) Program only
  - (c) Data, program and result or any kind of information
  - (d) None of these
- (iii) Interpretation of instruction in a computer is done by :
- (a) Registers
  - (b) Control Unit
  - (c) ALU
  - (d) Storage Unit
- (iv) ..... is used to print graphical output on paper.
- (a) Printer
  - (b) Laser
  - (c) Speaker
  - (d) Plotter
2. Convert the nos. into corresponding number system : 10
- (i)  $(1100 \cdot 101)_2 = ( )_{10}$
  - (ii)  $(24 \cdot 18)_{10} = ( )_2$
  - (iii)  $(37)_8 + (61)_8 = ( )_8$
  - (iv)  $(42 BA)_{16} = ( )_8$
  - (v)  $(10101)_2 + (11001)_2 = ( )_2$
3. Fill in the blanks with appropriate answers : 4
- (i) ..... converts program in high level language to machine language.
  - (ii) ..... is a fast memory that serves a buffer between processor and main memory.

- (iii) ..... controls the start up of a computer i. e., booting.
- (iv) 1 kilobyte = ..... byte.

## Section – B

6 each

## (Short Answer Type Questions)

4. What is RAM ? What is ROM ? Categorise each of RAM and ROM. Explain varieties of ROM.
5. Write two types of RAM. Write a comparison between these.
6. Explain and write their importance :
  - (i) Machine level language
  - (ii) Assembly language
  - (iii) High level language
7. What is Disk Operating System ? Differentiate between internal and external commands.
8. What is Operating System ? Write the functions of operating system. Explain :
  - (i) Multiprogramming OS
  - (ii) Time sharing OS
9. What is the difference between primary memory and secondary memory. Write the categories of memory under primary memory ? Explain them.
10. What is meant by editing a document ? What are the differences between editing and formatting a document ? Give example in reference to MS-word.
11. What is the basic technique applied in a mail merge operation in MS-Word ?

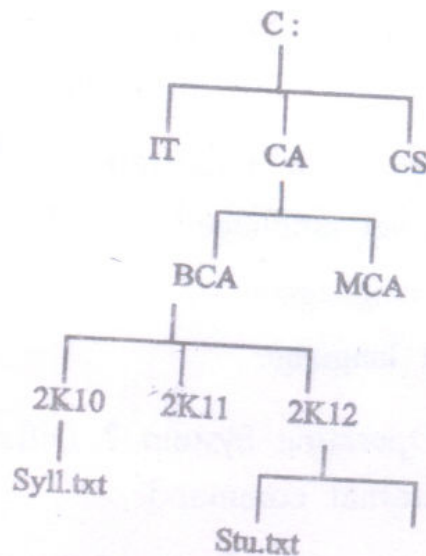
12. (i) What are Hyperlinks ? How would you insert a hyperlink in word document ?
- (ii) How would you put headers and footers in a WORD document ?
13. What is an Algorithm ? Give an algorithm and flow chart to find the largest of  $n$  given numbers.

## Section - C

15 each

## (Long Answer Type Questions)

14.



- (a) Create above directory structure with DOS command. (with files given)
- (b) Copy file syll.txt to the directory 2K12. (write command).
- (c) Explain the concept of batch file in DOS. How to create a batch file ?
- (d) Write two types of wild card characters and their meaning with examples.
15. (a) With reference to MS-Access :
- (i) Create a table with proper example. Write steps.

[ 5 ]

- (ii) Create a query. Write steps.
- (iii) What is a form ? Create a form. Write steps.
- (b) With reference to MS-Excel :
  - (i) Differentiate between work book and worksheet.
  - (ii) Describe data validation tool in Excel. Discuss 3 features in it.

)

5

5

3